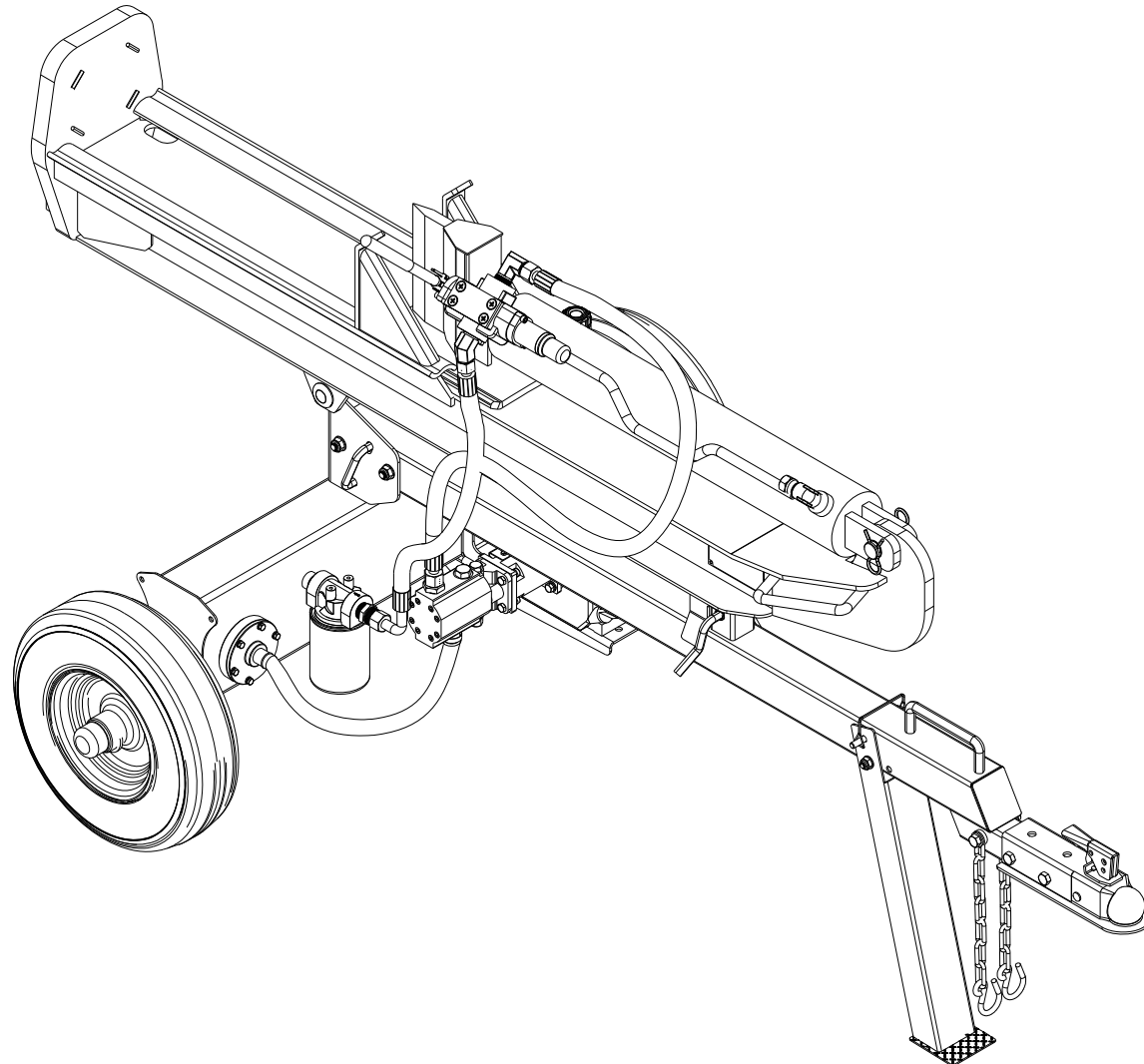
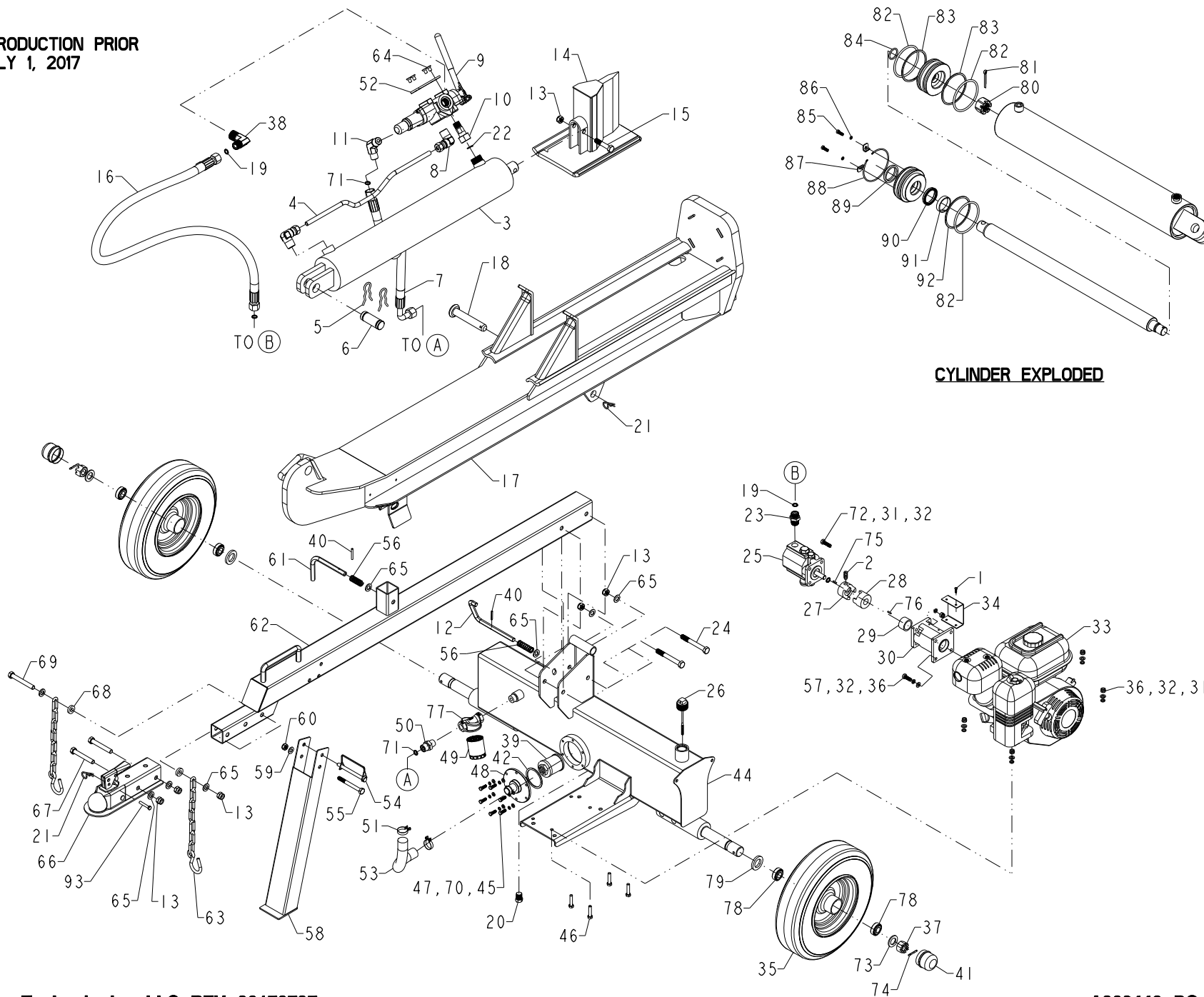




**ILLUSTRATED PARTS BOOK**  
**25 Ton Log Splitter**  
**SLS20825**

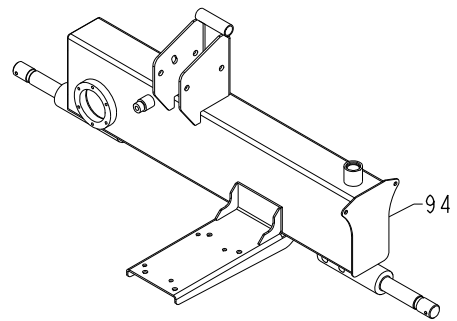


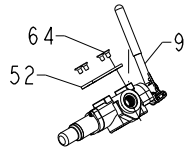
FOR PRODUCTION PRIOR  
TO JULY 1, 2017



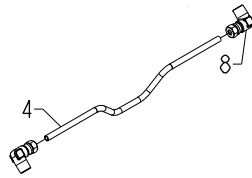
**CYLINDER EXPLODED**

FOR PRODUCTION AFTER  
JULY 1, 2017

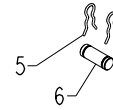




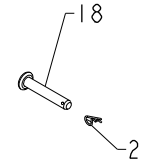
**KIT A**  
**CONTROL VALVE**  
**A203324**



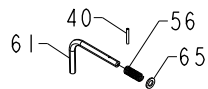
**KIT B**  
**METAL HYDRAULIC HOSE**  
**A203325**



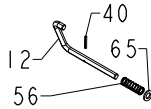
**KIT C**  
**PIN**  
**A203326**



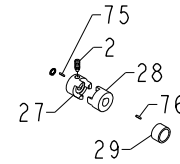
**KIT D**  
**PIVOT PIN**  
**A203327**



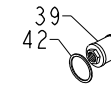
**KIT E**  
**FRONT PIN**  
**A203328**



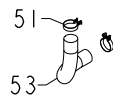
**KIT F**  
**REAR PIN**  
**A203329**



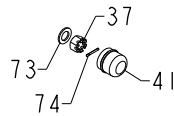
**KIT G**  
**COUPLER ASSEMBLY**  
**A203330**



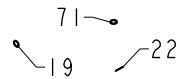
**KIT H**  
**INNER OIL FILTER**  
**A203331**



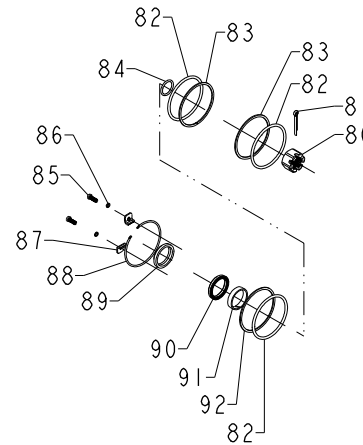
**KIT I**  
**OIL PIPE**  
**A203332**



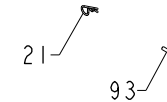
**KIT J**  
**WHEEL RETAINING**  
**A203333**



**KIT K**  
**O-RING**  
**A203334**



**KIT L**  
**CYLINDER REBUILD**  
**A203335**



**KIT N**  
**TOW HITCH PINS**  
**A203446**

**Hydraulic Oil**

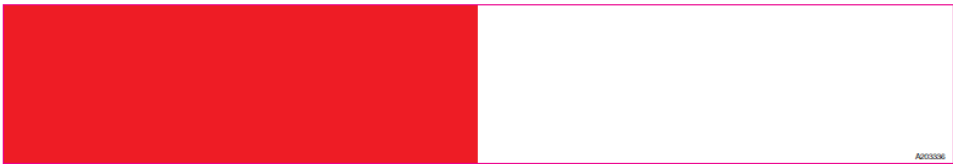
Use 10W AW32 or ISO 32 type.



A203336

**Vertical Splitting**

1. Pull front safety pin to release beam.
2. Rotate beam to vertical position.
3. Pull rear lock pin and rotate to 9:00 o'clock position to secure beam.



A203336

**NOTICE**

Keep the beam clean and free of debris to avoid damage to log splitter

**WARNING**

**Pinch Hazard**  
Avoid hand injury.

Lock support leg in the down position by inserting pin prior to splitting.

<b>WARNING</b>			<p><b>Operating Instructions</b></p> <ol style="list-style-type: none"> <li>1. Wear ANSI approved safety gloves, glasses and footwear.</li> <li>2. Position splitter on a flat surface with wheels blocked.</li> <li>3. After ensuring proper fluid levels, start engine and advance throttle.</li> <li>4. Position log onto beam and against the endplate. NOTICE: Always split wood in the direction of the grain and hold the log by its sides when loading.</li> <li>5. Push control valve handle FORWARD to split log.</li> <li>6. Push control valve handle BACKWARD to return wedge to its original position.</li> </ol>
<p><b>Read and follow operating instructions before operating log splitter.</b></p>	<p><b>Hydraulic fluid injection hazard</b></p> <ul style="list-style-type: none"> <li>• High pressure fluid escaping from a small hole can penetrate skin causing serious injury.</li> <li>• Avoid contact with escaping fluids.</li> <li>• Check for leaks using paper, never your hands.</li> </ul>	<p><b>Burn Hazard</b> Avoid skin burn</p> <ul style="list-style-type: none"> <li>• Hydraulic cylinder and other components can become very hot.</li> <li>• Avoid contact.</li> <li>• Wear gloves when operating.</li> </ul>	
<p><b>Impact or Pinch Hazard</b></p> <ul style="list-style-type: none"> <li>• Keep bystanders at least 10 feet away.</li> <li>• Only one person should operate and load the log splitter, staying within the designated operator zone.</li> </ul>	<p><b>Overturn and Slope Hazard</b> Avoid personal injury</p> <ul style="list-style-type: none"> <li>• Do not operate or transport log splitter on slopes greater than 5 degrees.</li> <li>• Block wheels to prevent movement and lock beam in the horizontal or vertical position.</li> </ul>		

**WARNING**

**Crush Hazard**  
Avoid hand injury.

- When pivoting beam to horizontal position, keep hands away from beam stop.
- Ensure pin completely locks beam before splitting or towing.

**WARNING**

Avoid serious injury or death while towing

- Read and follow operator manual instructions for correct attachment and towing.
- Ensure the correct ball size of 2 inch is on the towing vehicle.
- Ensure safety chains are correctly attached prior to towing.
- Do NOT exceed a maximum towing speed of 45 MPH.

**WARNING**

**Crush Hazard**

Avoid injury

Keep arms and hands away from moving parts.

**CONTROL LEVER OPERATION**

Split Log ← Neutral → Return

**KIT M  
WARNING DECALS  
A203337**

## SLS20825 PARTS LIST

Ref#	Part No.	Description	Qty
1		Hex Bolt M5 x 0.8 x 10mm, Zinc, Grade 8.8	4
2	Kit G	Inner Hex Cone Point Set Screw M6 x 1.0 x 10mm, Black Oxide, Grade 4.8	1
3	A203441	Cylinder, Red	1
4	Kit B	Metal Hydraulic Tube	1
5	Kit C	Retaining Pin Ø5mm	2
6	Kit C	Cylinder Pin	1
7	A203301	Hydraulic Hose (Valve to External Filter)	1
8	Kit B	Compression Elbow	2
9	Kit A	One-Way Single Handle Control Valve	1
10	A203302	Combination Connector	1
11	A203303	130° Elbow	1
12	Kit F	Rear Pin	1
13		Nylon Lock Nut M12 x 1.75, Zinc, Grade 4.8	6
14	A203304	Wedge	1
15		Hex Bolt M12 x 1.75 x 65mm, Zinc, Grade 8.8	1
16	A203305	Hydraulic Hose (Valve to Pump)	1
17	A203306	Beam Assembly	1
18	Kit D	Pivot Pin	1
19	Kit K	O Ring Ø11.2 x 2.4mm	3
20	A203307	Oil Plug	1
21	Kit D & N	Cotter Pin Ø12mm	2
22	Kit K	O Ring Ø15.2 x 2.4mm	1
23	A203308	Pump Outlet Connector	1
24		Hex Bolt M12 x 1.75 x 100mm, Zinc, Grade 8.8	2
25	A203309	Gear Pump	1
26	A203310	Oil Cap	1
27	Kit G	Gear Pump Coupler	1
28	Kit G	Engine Coupler	1
29	Kit G	Engine Bushing	1
30	A203311	Gear Pump Stand	1
31		Nylon Lock Nut M8 x 1.25, Zinc, Grade 4.8	8
32		Lock Washer M8	12
33	See Note A	Engine 208cc Horizontal Shaft	1
34	A203312	Coupler Cover	1
35	A203313	Wheel Assembly	2
36		Flat Washer M8	8
37	Kit J	Thin Hex Slotted Nut M20	2
38	A203314	90° Elbow	1
39	Kit H	Inner Oil Filter	1
40	Kit E & F	Spring Pin Ø3 x 30mm	2
41	Kit J	Axle Cap	2
42	Kit H	Rubber Gasket	1
43	Kit G	Wire Snap Ring For Shaft	1
44	A203442	Oil Tank, Red, with (2) A203336 50 x 300mm Reflectors	1
45		Flat Washer M6	6
46		Hex Bolt M8 x 1.25 x 40mm, Zinc, Grade 8.8	4
47		Hex Bolt M6 x 1.0 x 20mm, Zinc, Grade 8.8	6

Ref#	Part No.	Description	Qty
48	A203316	Filter Fixed Plate	1
49	A203317	Outer Oil Filter	1
50	A203318	Connector	1
51	Kit I	Hose Clamp	2
52	Kit A	Plate	1
53	Kit I	Oil Pipe	1
54	A203319	Lock Pin	1
55		Hex Bolt M10 x 1.5 x 95mm, Zinc, Grade 8.8	1
56	Kit E & F	Spring	2
57		Hex Bolt M8 x 1.25 x 25mm, Zinc, Grade 8.8	4
58	A203320	Front Support Leg	1
59		Flat Washer M10	1
60		Nylon Lock Nut M10 x 1.5, Zinc, Grade 4.8	1
61	Kit E	Front Pin	1
62	A203321	Tow Bar 2" Ball Diameter	1
63	A203322	Chain Assembly	2
64	Kit A	Cross Screw M8 x 1.25 x 10mm, Zinc, Grade 4.8	4
65	Kit E & F	Flat Washer M12	8
66	A203323	Coupler	1
67		Hex Bolt M12 x 1.75 x 80mm, Zinc, Grade 8.8	2
68		Flat Washer M12 x 32 x 4mm Thick	2
69		Hex Bolt M12 x 1.75 x 90mm, Zinc, Grade 8.8	1
70		Lock Washer M6	6
71	Kit K	O Ring Ø17 x 2.5mm	2
72		Hex Bolt M8 x 1.25 x 30mm, Zinc, Grade 8.8	4
73	Kit J	Flat Washer M20	2
74	Kit J	Cotter Pin Ø4 x 36mm	2
75	Kit G	Gear Pump Key 3.2 x 3.2 x 25mm C1045 Steel	1
76	Kit G	Engine Key 4.78 x 4.78 x 44.5mm C1045 Steel	1
77	A203338	Filter Housing	1
78	A203339	Tapered Roller Bearing	4
79	A203340	Oil Seal	2
80	Kit L	Slotted Nut	1
81	Kit L	Cotter Pin	1
82	Kit L	O Ring Ø95 x 5.3mm	3
83	Kit L	Snap Ring	2
84	Kit L	O Ring Ø30 x 3.55mm	1
85	Kit L	Hex Bolt	1
86	Kit L	Lock Washer	1
87	Kit L	Retaining Bracket	1
88	Kit L	Snap Ring	1
89	Kit L	Dust Ring	1
90	Kit L	Seal Ring	1
91	Kit L	Guide Ring	1
92	Kit L	Snap Ring	1
93	Kit N	Tow Hitch Pin	1
94	A203775	Oil Tank, Red, with (2) A203336 50 x 300mm Reflectors	1

## KITS

Kit#	Part No.	Description	Ref#
A	A203324	Control Valve	9,52,64
B	A203325	Metal Hydraulic Hose	4,8
C	A203326	Pin	5,6
D	A203327	Pivot Pin	18,21
E	A203328	Front Pin	40,56,61,65
F	A203329	Rear Pin	12,40,56,65
G	A203330	Coupler Assembly	2,27,28,29,43,75,76

Kit#	Part No.	Description	Ref#
H	A203331	Inner Oil Filter	39,42
I	A203332	Oil Pipe	51,53
J	A203333	Wheel Retaining	37,41,73,74
K	A203334	O-Ring	19,22,71
L	A203335	Cylinder Rebuild	80-92
M	A203337	Warning Decals	/
N	A203446	Tow Hitch Pins	21, 93

Note A: Consult the accompanying engine manual or contact our service department at 1-800-558-5402 for assistance.